

## Version 8.0

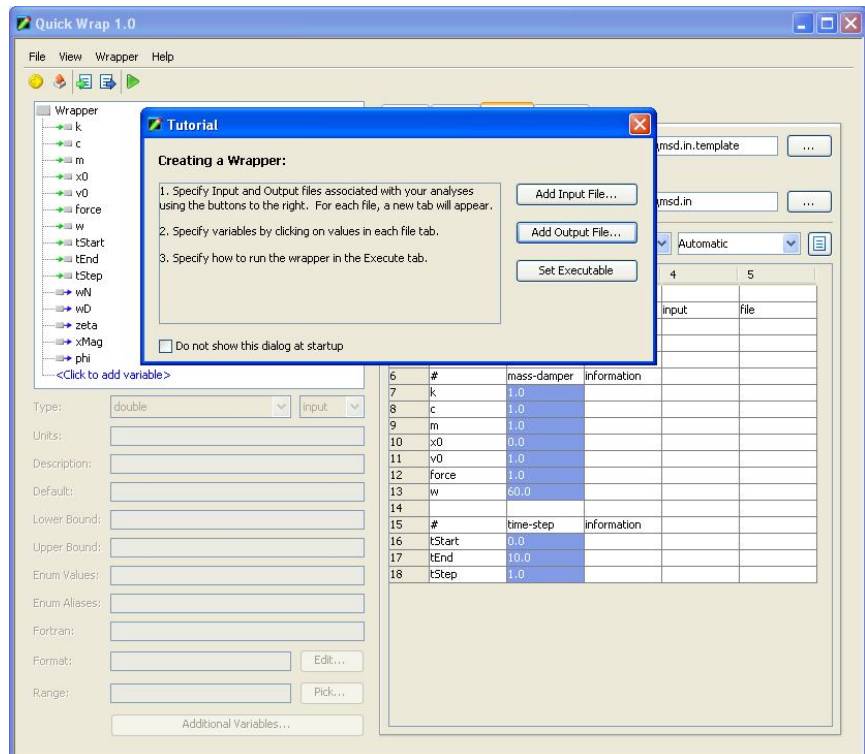
- Visually wrap programs with **QuickWrap**
- Embed geometry directly in **Analysis View**
- Display geometry data with **Geometry File Variables**
- Interpret and compare results with **Geometry Tooltips**

ModelCenter 8.0 includes new features for quickly wrapping command line simulations (such as CAE tools), better evaluating and comparing design alternatives, more easily viewing the geometry associated with your model, and sharing results with colleagues, managers, and customers.

### QuickWrap

The QuickWrap tool provides an intuitive point and click graphical user interface for quickly wrapping any command line simulation. In most cases, input and output variables are specified by simply pointing and clicking on the variables in the input and output files with the mouse. The QuickWrap tool writes a Java ScriptWrapper “under the hood” that can be customized if additional functionality is needed.

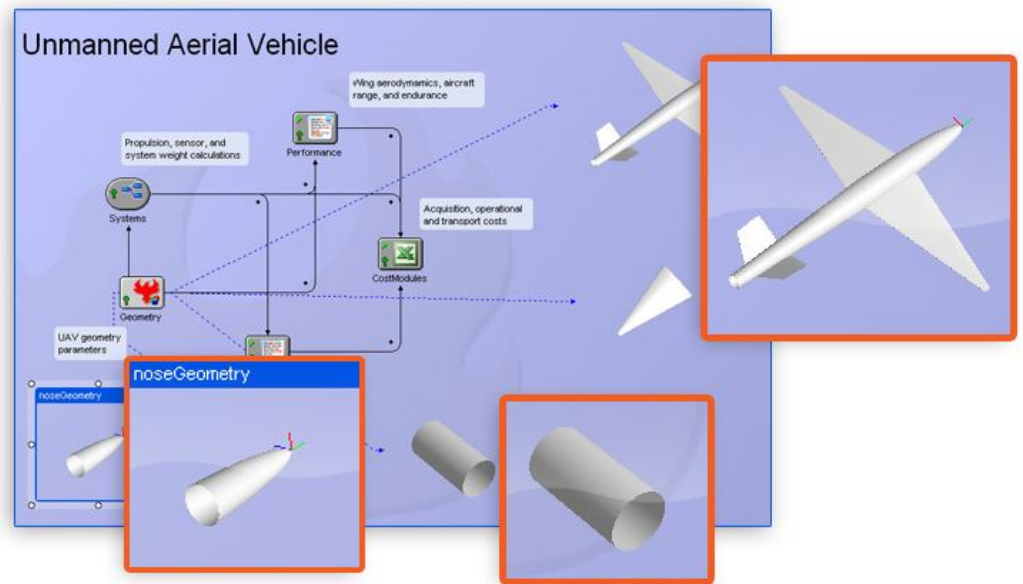
- Wrap generic input/output file simulations using a graphical point-and-click interface.
- Access the tool directly from ModelCenter or use a standalone version to generate wrappers on Linux and Unix machines.
- Edit the automatically generated scripts to add custom functionality.



## Geometry Controls

The new Geometry Controls will allow you to view model geometry directly in ModelCenter's Analysis View and to monitor changes in real time as your trade study runs.

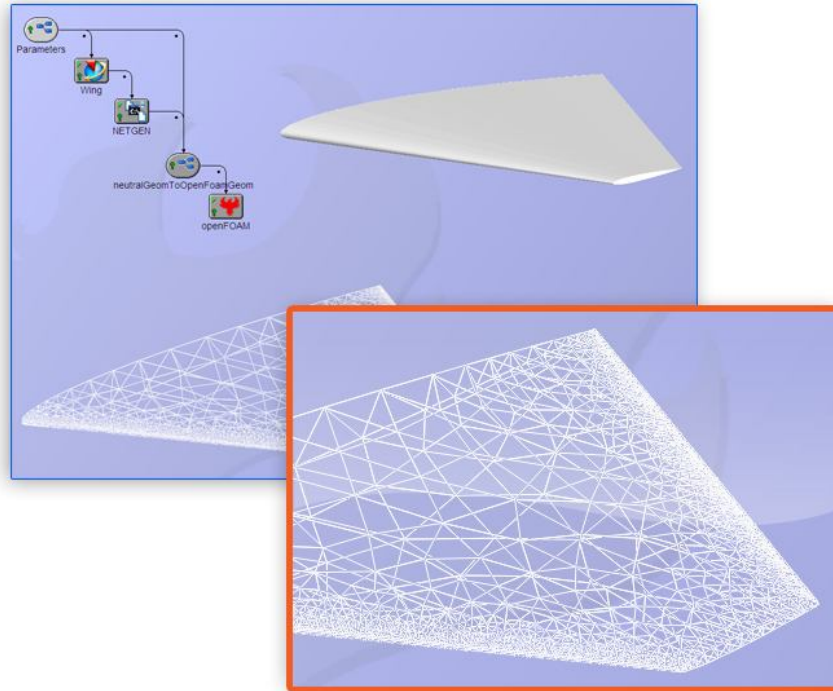
- Drop geometry variables in ModelCenter's Analysis View and see the associated geometry alongside your model.
- Watch the geometry change in real time as parameter values are modified.
- Display multiple geometry components simultaneously.
- Monitor trade-study execution and sanity-check your results.



## Geometry File Variables

ModelCenter's new geometry rendering infrastructure makes it easier to import, create, and display geometry in ModelCenter. Users are no longer restricted to defining geometry using a limited set of predefined formats. ModelCenter 8.0 will automatically recognize and render commonly used geometry file formats such as IGES, STEP, NASTRAN, ABAQUS, STL, PLY, and Plot3D. Users can extend this built-in capability with their own custom geometry renderers.

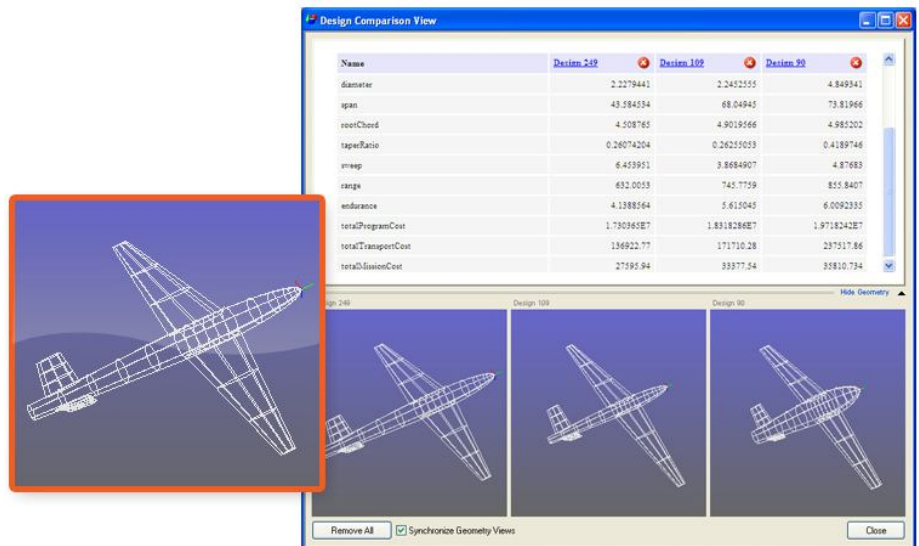
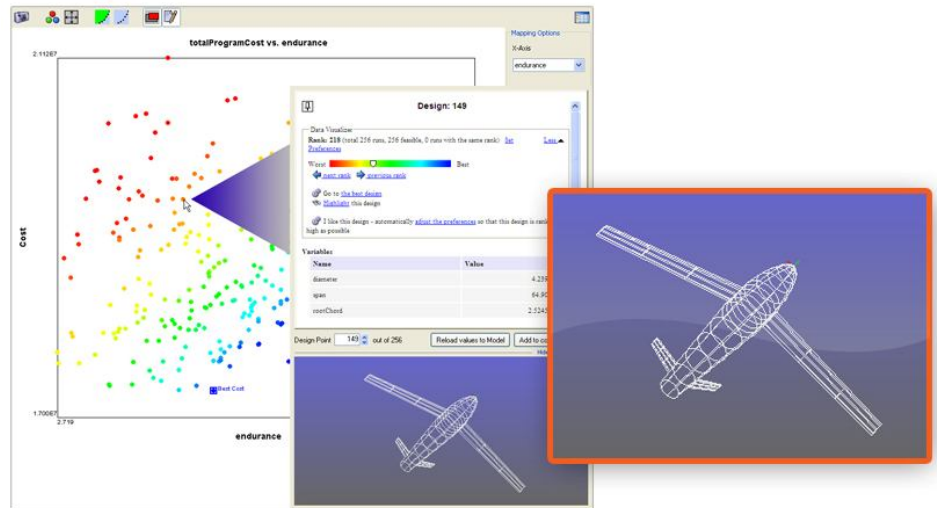
- Import and display geometry directly in ModelCenter.
- Automatically render commonly used geometry formats such as IGES, STEP, NASTRAN, ABAQUS, STL, PLY, and Plot3D.
- Extend the built-in capabilities with your own custom geometry renderers. Custom geometry renderers can be written in Java BeanShell or pure Java, and have access to the full OpenGL graphics library.



## Design Viewer

The Design Viewer is a new feature in ModelCenter's Data Explorer that allows you to quickly and easily view key values and geometry associated with any of your design alternatives.

- Activate the Design Viewer by resting your mouse over any point in a Data Explorer plot<sup>1</sup> or on a column header in the Data Table.
- View the values of key input and output variables.
- View a 3-D representation of the geometry associated with your design. Use your mouse to manipulate the geometry (translate, rotate, zoom, change shading, etc.).
- Define your preferences (goals and constraints) and see how each design ranks relative to the others<sup>2</sup>.
- Compare promising design alternatives side-by-side.
- Communicate trade-study results to colleagues, managers, and customers.



<sup>1</sup> Available in 2D Point, Scatter Matrix, DV Glyph, DV Star Glyph, DV Parallel Coordinates, DV Scatter, and DV Scatter Matrix plots.

<sup>2</sup> Requires VisualizationPak

## Additional Features

- New icons and look-and-feel updates.
- Data Visualizer is now tightly integrated into the Data Explorer, allowing you to use its preference shading and design views directly from any page/chart.
- Added an ability to add annotations to individual points in Data Visualizer plots.
- Improved thumbnail views in Data Explorer.
- The FlexLM Licensing infrastructure was upgraded to FlexNet v11.6. Includes improved management of the borrow feature and the ability to return borrowed licenses early.
- Added a new auto-linker mode that links variables based on a "best match" algorithm that takes into account levels of matches and "output" and "input" groups.
- Internationalization support. ModelCenter can now be customized to support languages other than English.

### CURRENT USERS

Become a ModelCenter expert with Phoenix's [10 for 1 Training](#)

### NEW USERS

Get Started with Phoenix's [Path to Value](#)

### RESELLERS

The latest tools & information at the [Phx Reseller Portal](#)